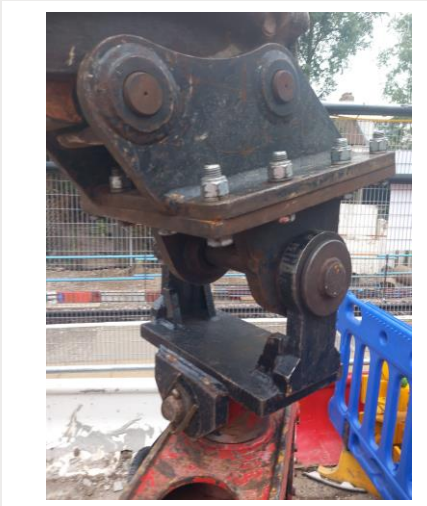


STOPThink! Fractured Finger



EMV attachment, upper plate visible



EMV attached to excavator quick hitch.

What happened?

At an Octavius project a supervisor was undertaking end of shift checks. Following the completion of the night's works an excavator mounted vibrator (EMV) piling hammer had been placed into its storage cradle and disconnected from the excavator's quick hitch. The supervisor believed the EMV looked unstable and could fall against the fencing along the rear of the station platform.

They asked for some assistance for it to be moved. In the interim whilst waiting for assistance they tried to manoeuvre the attachment. This led to the top plate of the EMV rotating on the lower swivel point and trapping the little finger of his left hand.

First aid was administered, and they took themselves to A&E where their finger was X-rayed and confirmed as fractured.

Despite concerns, the EMV was stable in its cradle and was not at risk of falling.

Impacts

- Work on the project was stopped to allow the investigation into the incident.
- The injured person, following their treatment at hospital, was able to return to work on their next shift. They were given support from another OIL team member through the shift and to confirm their wellbeing.

Shared Learning

- If it is suspected that a heavy item is insecure or unstable, assess the situation and create and maintain an exclusion zone. This removes people from the hazardous area and risk of injury and allows time for further assessment and resolution.
- Only those that are trained and competent should have interaction with moving plant and their attachments.

