

STOPThink! Paver Hand Injury

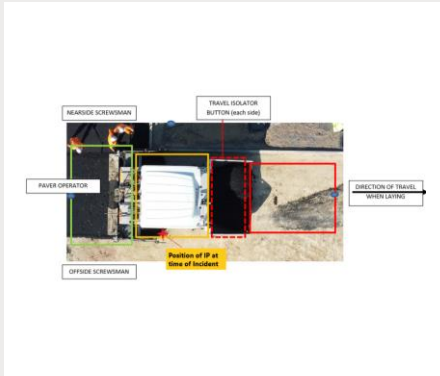


Image showing Paver Exclusion Zones

What happened?

An operative suffered an injury to his finger when working for the surfacing gang supplied by one of our sub-contract companies. The IP was operating the right side screws of a paving machine supplied by Aggregate Industries which had been moved into position to start laying binder course material.

The IP entered the amber exclusion zone on the right side of the paver to remove some lumps of binder material he had spotted. In doing so he slipped and put out his right hand to steady himself. His hand came into contact with the floating screed arm on the right side of the paver and their middle finger became trapped by the floating screed arm.

After a short time the IP's trapped finger was released.

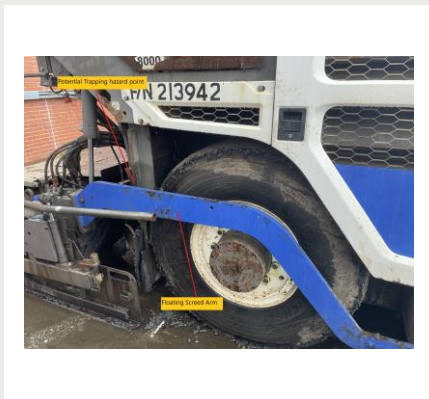


Image showing potential trapping hazard point and screed arm

Impacts

- The IP visited hospital and x-rays showed no broken bones and after the wound was cleaned and stitched the IP was discharged later on that morning.
- There was no lost time reported.
- Investigation is currently ongoing to gain a full understanding of the events/circumstances, and root causes and learning outcomes have yet to be established.

Immediate actions whilst the investigation is on-going

1. Ensure RAMS/WPP's are reviewed to ensure exclusion zones and pinch/trapping point hazards are assessed.
2. Ensure all operatives involved in similar operations are briefed on their RAMS/WPP's etc.
3. Supervisors must enforce the exclusion zones around machinery.
4. Maintain good housekeeping to reduce the risks of slips/trips/falls.
5. Ensure gloves (Min Cut 3B) are suitable for the task and are worn.
6. Ensure all site personnel are aware of emergency arrangements. First Aiders/Hospital locations etc.

