

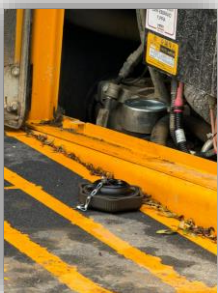
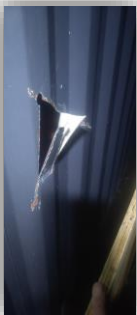
## How secure are your sites / vehicles?



Grays AFA 04.07.2024 (Rail)



Godstone – Theft of a tipper



### What happened?

In the last 6 months there has been an increase of thefts and damages across the business. There have been 12 reports of theft and damage recorded via our reporting platforms which includes vehicles. Inflation and the cost-of-living crisis are driving an increase in construction crime.

### Impacts

- The theft of essential machinery can halt construction activities until replacements are sourced.
- Project delays and potential contractual penalties.
- Indirect costs such the increase in the cost of insurance and the resource needed to deal with incidents drive up project expenses.
- Theft in construction incidents can tarnish the reputation of construction companies.
- Safety risks to workers and the public, particularly if stolen equipment or materials are essential for ensuring site safety.

### Immediate action

1. **Take timely risk assessments.** Carry out a comprehensive risk assessment of your site as early as possible.
2. **Employ deterrents.** Visible measures, such as CCTV towers and temporary fencing.
3. **Use real-time monitoring capabilities.** Site managers can keep an eye on their site at all times with 24-hour imaging technology.
4. **Be vigilant.** All projects work on an evolving timeline, so risk levels are assessed and adjusted accordingly to the work.

**Octavius staff and our suppliers must ensure that they take appropriate measures:**

- Improve Lighting where possible.
- Control who has access to site, including keys to vehicle / plant.
- Remove desirable items out of view / off site where possible.
- Communicate all security procedures.
- Supervisors carry-out comprehensive security checks at the end of the shift.
- Report all breaches and threats.

