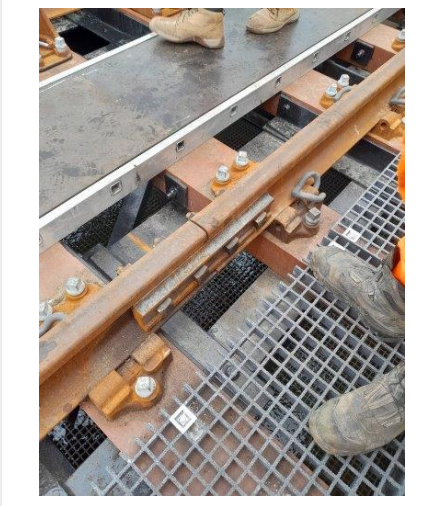
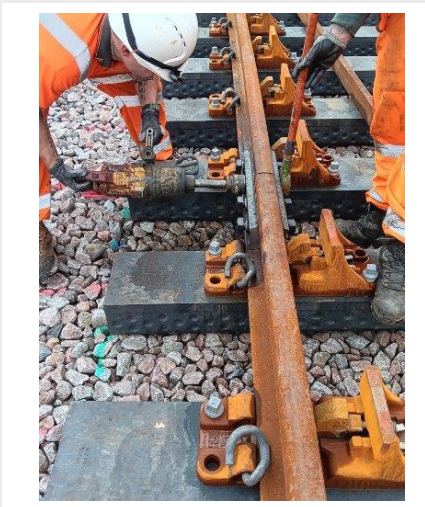


# STOPThink! Finger Injury Ryde Pier



Example of a Fish plate Rail Joint



Method for installing/ removing fish plates

## What happened?

A P-way operative was standing adjacent to a fish plate rail joint, which was about to be removed. They thought they had dropped something and bent down to check. As they did this, they placed their hand on the rail head near to the fishplate bolt. At the same time an impact wrench was used by another operative to remove the nut. This caused the bolt to spin and the first operative sustained an impact injury to their index finger when it came into contact with the rotating bolt head.

## Impacts

- The operative received a laceration and fracture to the tip of his left index finger.

## Immediate action

1. First aid administered on site, then then the IP was taken to hospital for further treatment.
2. Works of this nature were stood down and all personnel re-briefed on the correct method of fishplate bolt removal while the investigation proceeds

Octavius staff and our suppliers must confirm that they:

Ensure that adequate means of communication are in place and understood by those undertaking any team activities.

Ensure all staff understand the importance of stopping and confirming that a message has been received and understood before entering an 'at risk' area.

