

Event details

Date of incident: 23.09.24

Time of incident: 13:25

Location of incident: Isle of Wight

Route: Insert route

Discipline: Track

Event description: A P-way operative was standing adjacent to a fish plate which was about to be removed. They thought they had dropped something and bent down to check. As they did this, they placed their hand on the rail head. At the same time an impact wrench was used by another operative to remove a nut. As the bolt head moved, the first operative sustained an impact injury to their index finger as it came into contact with the rotating nut/bolt assembly.

Who was involved? Sonic Rail Services P-Way operative, supplied by Kingsmere Rail.

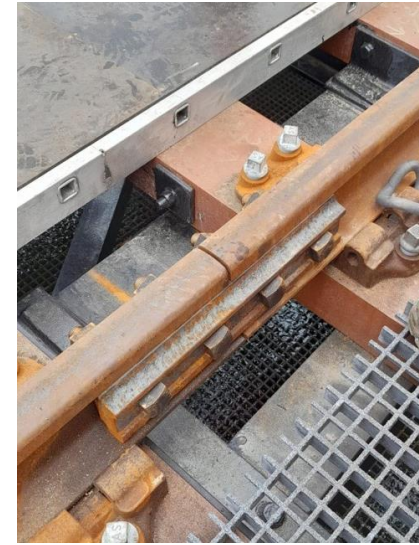
Any injuries and updates on persons involved: The operative received a laceration to their index finger and a fracture to the tip of the finger. They were seen at A&E on the 23rd and reviewed by orthopaedics on the 24th. They are expected to make a full recovery and they returned to site on the 24th.

Initial causes identified:

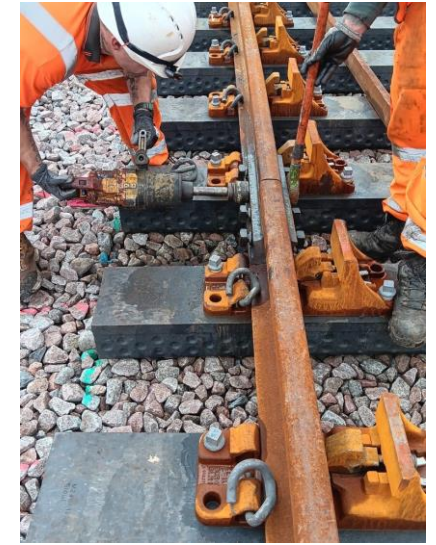
- The operative about to use the impact wrench didn't hear the injured operative ask him to hold works as they put their hand on the rail.

Key issues for the investigation to consider:

- Safe system of work
- Communication arrangements



Example of a fish plate



Method for installing/removing fish plates

Immediate actions taken:

- Operative was given immediate first aid, then taken to hospital on the Isle of Wight.
- Works of this nature were stood down and all personnel rebriefed on the correct method of fishplate bolt removal as investigation proceeds

Could this happen in another location: Yes

DCP: Matt Wright

Level of investigation: Level 1