

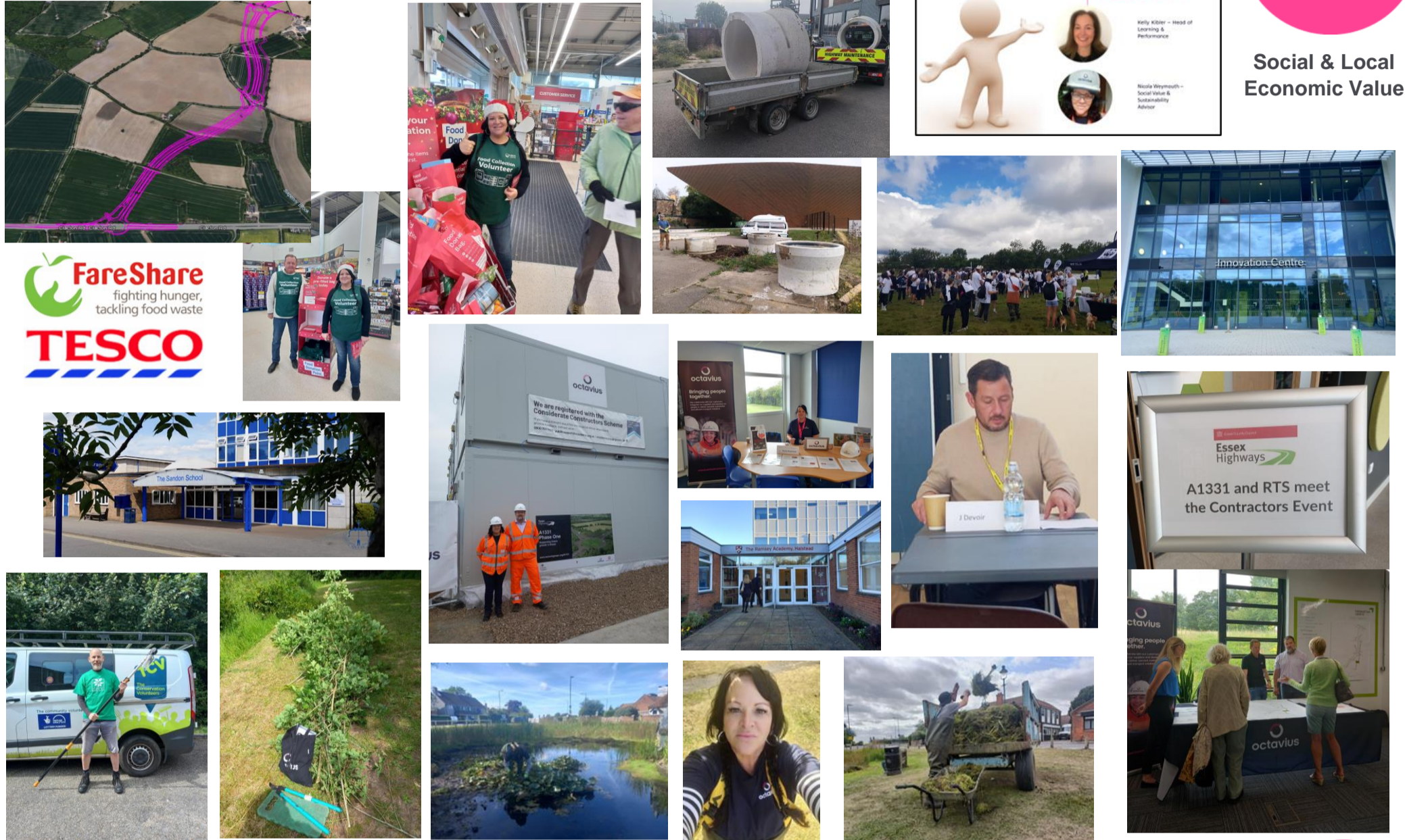
The Colchester Phase One of A120-A133 Link Road (A1331)

Thrive Report November 2024



£1,288,149.00 Total Social Value Added*

Project value: £27,795,000.00



Local value



£8,026.k Achieved from spend within Essex

£1,276.k Achieved from spend with Essex small medium enterprises

6 Essex based employees working full time on the project. 3 Essex based employees working part time on the project.

Social, wellbeing & community



12 Hours spent volunteering with The Conservation Volunteers in Danbury Pond and Wivenhoe.

6 People hours spent supporting local community groups like Tesco FareShare food collection.

20 staff hours delivering a Meet The Contractor Event to local people and E.C.C. Members.

Employment, education & skills



20 Hours delivering mock interviews and careers advice to students at New Hall School, Ramsey Academy and Sandon School in Essex.

Industry Talk delivered to careers leader/teachers in Essex at County Hall.

Sustainability



7 Low Emission Staff Vehicle on site, savings so far on the project: 10,240 miles in Co2 emissions.

Concrete Pipes donated to Beth Chatto Gardens to use as planters including delivery and staff time.



Octavius Infrastructure Working in Partnership With Essex County Council

*including local economic value, measured using the Essex County Council TOM's Framework