

Construction Route to Gold

Period 10



10 February 2025

What is Construction Route to Gold?

Construction Route to Gold is a performance measurement initiative within the Southern region Capital Works supply chain. The initiative aims to promote collaborative working behaviours, reduce costs caused by re-work and embed a culture of continuous improvement within the rail industry.

184217 - IOW 23/24 RYDE PIER - highest scoring site for Period 10

What are we doing: Phase 1 of the project involved works through Ryde Esplanade station, onto the first 11 No spans of the adjoining pier. Work was successfully completed to programme in October 2023, which involved removal of old timber sleepers and bullhead rails, replacement of life expired rail bearers on the pier, install of new FFU sleepers, flat bottom rails and GRP decking including a temporary buffer stop.



Phase 2 of the project is underway across 44 No pier spans which comprise rail bearer top flange strengthening, removal of old timber sleepers, bullhead rails, install of new FFU sleepers, flat bottom rails, new GRP walkway decking and associated signalling alterations. Work is due to complete in May 2025.

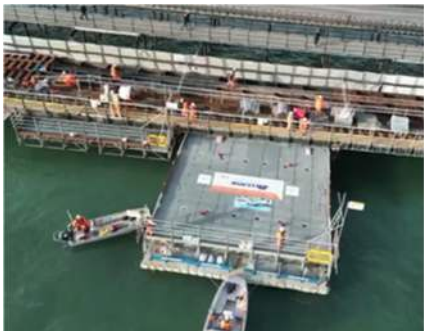
What are the Benefits to the Passenger: The track renewal and railbearer works will have significant benefits to train service performance, asset resilience and rail users and once completed, there should be no need to undertake any major works or line blockades for the next 60 years.

The Team: What makes the site and the team the highest scoring site in Southern: Gene Brennan (NWR Construction Manager) comments: There have been some really good initiatives and best practices put in place, such as:

1. Established segregate walkway on the platform using fixed handrail on the non-operational platform to provide alternative shorter emergency access route to work site and shorter walkway to the welfare in the satellite compound.
2. 40ft Scaffold prefabbed ,built and assembled off site and ferried by pontoon to site for installation to reduce installation period on site and mitigating delay by weather , strong wind affecting tides



3. Installation of Monoflex on the cess side of the operational track to protect public from over spray from jet washing.



Octavius Ltd		Network Rail	
Project Manager	Conor Wilcox	Project Manager	Rod Farrow
Site Manager	Majid Nassiri	Scheme Project Manager	Matt Ellis
Senior Site Engineer	Santiago Soto	Construction Assurance Mangr	Keith Waters
Supervisors	Noel Ford & Gary Mundy	Construction Managers	Gene Brennan

Top scoring Gold & Silver sites by Route/ Discipline are:

SID	Route	Discipline	Score	Company
SID - B&C	182052 - S-100360 - Lymington Viaduct	Enhancements	No entries this period	
SID - E&P	162208 - NSCD - Pollhill sub	CP6 Tail - B&C	184217 - IOW 23/24 RYDE PIER	Octavius Ltd
SID - Sig	No entries this period	CP6 Tail - E&P	No entries this period	
SID -Track	No entries this period	CP6 Tail - Sig	No entries this period	
SID - WD	167425.dl - Kent CIS - Lewisham			Fourway Coms Ltd

If you would like a full score summary report for all Southern region Capital Works sites, please contact: [Paul Burr](#).

GOLD SITES



[Octavius Ltd](#)
IOW Ryde Pier Refub

[Octavius Ltd](#)
IOW Ryde Pier

SILVER SITES



[Fourways Ltd](#)
Kent CIS: Lewisham

[Octavius Infrastructure Ltd](#)
NSCD: Pollhill, Nutbourne
Lymington Viaduct

[VolkerFitzpatrick Ltd](#)
Hook Up Embankment
Honiton Tunnel