

# The Hertfordshire Framework Social Impact Report

January 2022 – February 2025



**£2,295,165.00 local total social value added\***

(supporting the wider UK economy, £6,172,752.00\* total social value added)

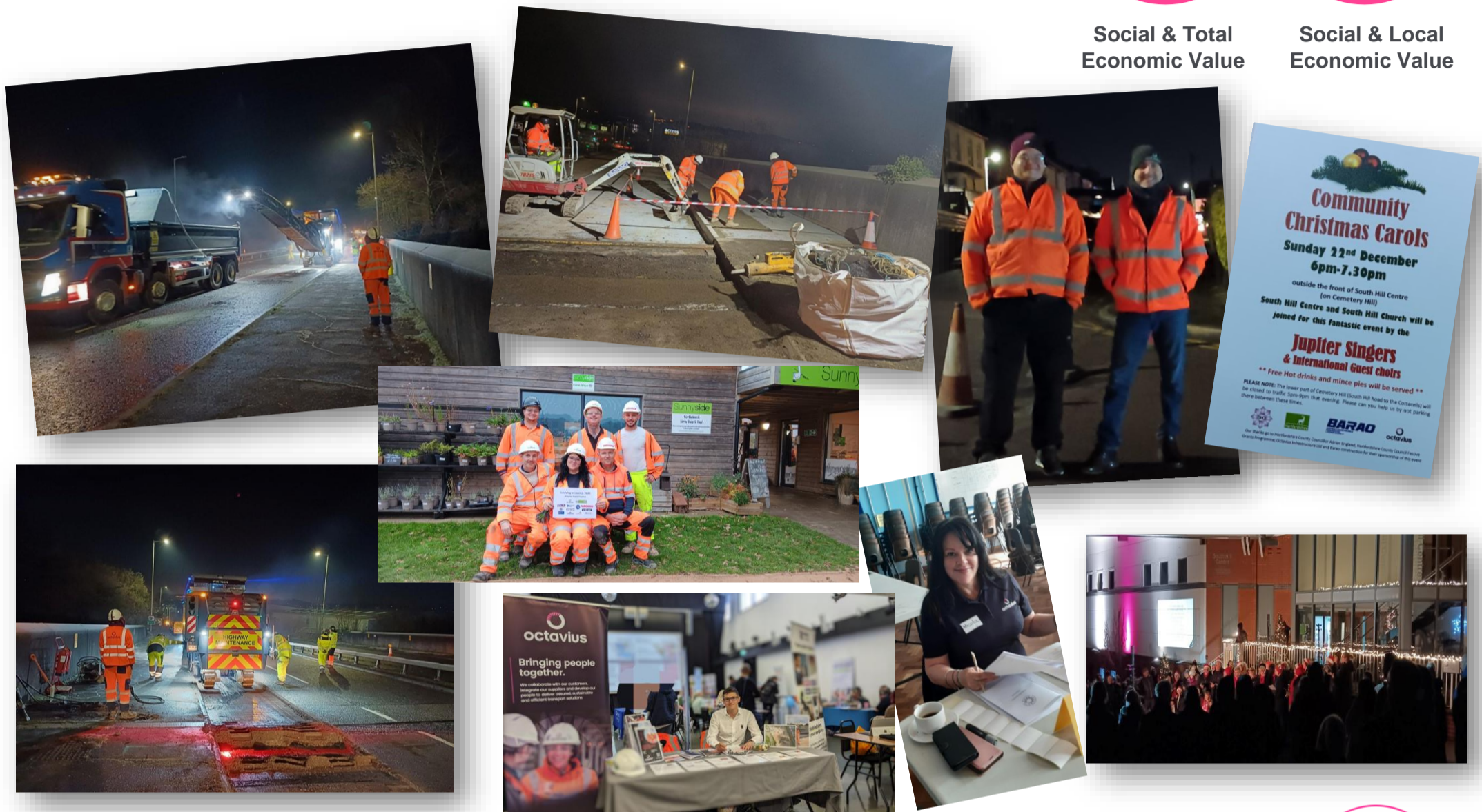
**Framework value: £20,000,000.00**



Social & Total Economic Value



Social & Local Economic Value



## Local value

£649k achieved from spending with small and medium enterprises

£1.28m achieved from spending with businesses in Hertfordshire

£3.87m achieved from spending with regional & national businesses

## Employment, education & skills

1,083.5 people hours of learning interventions delivered. 6 Hours on Equality, Diversity & Inclusion Training.

219 people hours spent supporting educational activities with schools & colleges in Hertfordshire

403 people benefitted from community or educational outreach in Hertfordshire since April 2024



## Sustainability

13.89 tonnes CO2 carbon reduced

Eco Units & Solar CCTV reducing CO2e

893.5 people hours spent protecting and improving the environment



## Social, wellbeing & community

1,449 people hours spent supporting community initiatives in Hertfordshire

£101,163.00 achieved from donations made to support community activities in Hertfordshire (including professional services)

Leaving A Legacy 2024 – successful completion of a car park refurbishment for the Sunnyside Rural Trust, Northchurch



**Octavius Infrastructure Working in Partnership with Hertfordshire County Council**

\*Measured using the IES Framework